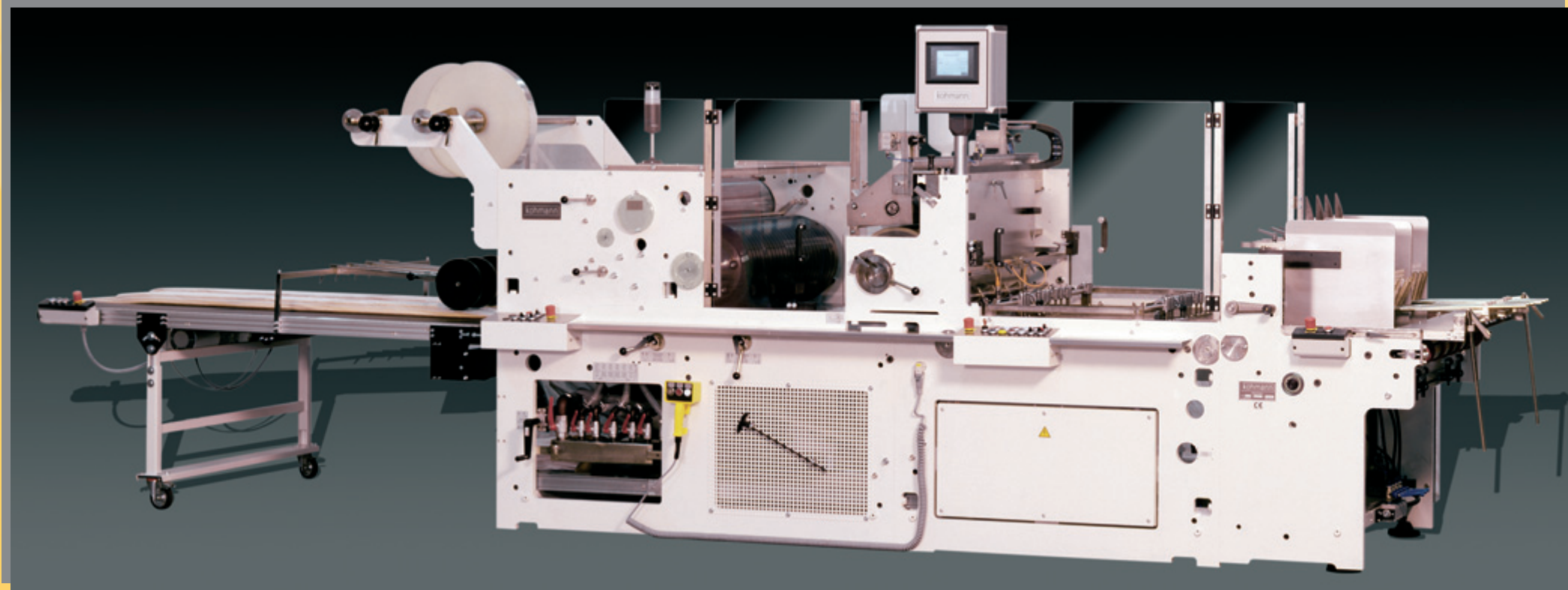


- ▶ **F-1100 Universal**
- ▶ **F-1400 Universal**
Window Patching Machine
for Cardboard Packaging

▶ **Always a clear view**



► **Universal**

Innovative technology combined with proven engineering offer the best in productivity and efficiency. Low investment costs and high processing performance guarantee future success. These principles guide the design of our window patching machines.

► **Convincing**

- Short set-up times thanks to computer-aided setting assistance
- Direct drive on film infeed for shortest setting-up times
- Various feeder concepts; option of batch or belt lifter system
- Operator friendly thanks to data input via touch screen panel
- Multi-purpose options available
- electronic feeder, servo-driven with automatic speed compensation

► **Proven**

The single roller glue unit is fully retractable and ensures clean production. Optimum processing due to small glue surface. Very little residue to be disposed of when the work is finished.

► **High-performance**

Large cylinder diameters and compatible machine components guarantee high machine performance. Numerous sensors for quality assurance reduce downtimes and prevent interruptions in downstream process stages.

► **Flexible**

Whether you require a simple window on a standard blank or a more complicated "pick & place" process on high-quality board: Our design allows the use of all additional equipment, either installed in our factory or retrofitted at a later point in time.

► **Innovative**

Data input with a graphics-capable touch screen, PLC control to monitor the machine's functions and servo motor drives to reduce set-up time guarantee effective work and are therefore fixed components in the machine.

► **Specifications:**

Adjustment range, single stream operation			
	F-1100		F-1400
	min	max.	max.
Blank length, mm	100	1020	1020
	inch	3 ¹⁵ / ₁₆ "	40 ¹ / ₈ "
Blank width, mm	80	1120	1440
	inch	3 ¹ / ₈ "	44 ¹ / ₈ "
Film length, mm	50	720	720
	inch	1 ¹⁵ / ₁₆ "	28 ⁵ / ₁₆ "
Film width, mm	30	840	1140
	inch	1 ³ / ₁₆ "	33 ¹ / ₁₆ "

Adjustment range, double stream operation			
	F-1100		F-1400
	min	max.	max.
Blank width, mm	80	545	705
	inch	3 ¹ / ₈ "	21 ¹ / ₄ "
Film width, mm	30	depending on blank position	
	inch	1 ³ / ₁₆ "	

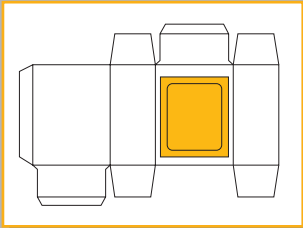
Total power consumption: 20-25 kW

Output figures

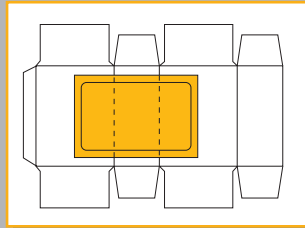
F-1100/F-1400		
	1-stream	2-stream
1-up operation, blanks over 475 mm (>18.7")	max. 200 pcs/min.	max. 400 pcs/min.
2-up operation, blanks under 475 mm (<18.7")	max. 400 pcs/min.	max. 800 pcs/min.
3-up operation (optional), blanks under 320 mm (<12.6")	max. 600 pcs/min.	max. 1200 pcs/min.

Änderungen vorbehalten/Subject to change

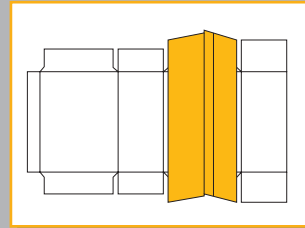
► www.kohmann.de



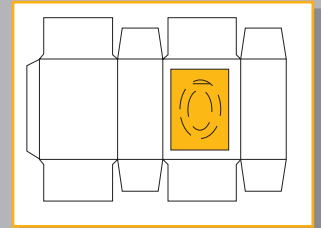
Normal window



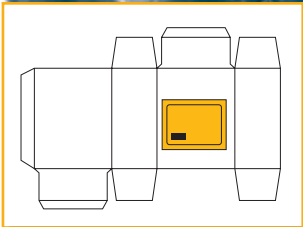
Continuous or crease perforation



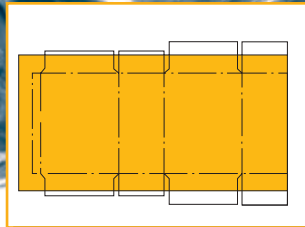
sealed inner tube



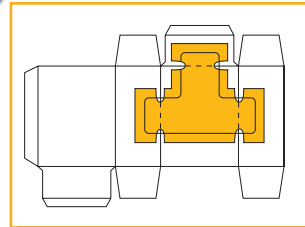
Form slitting



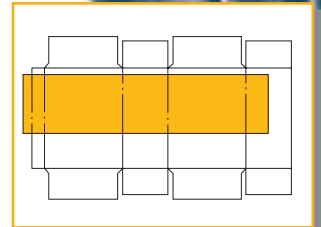
Pre-printed foil



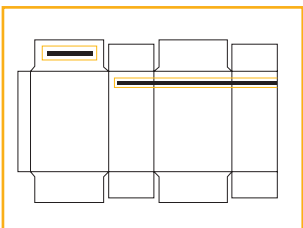
Lining material



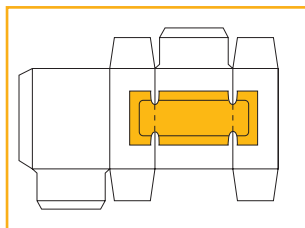
Score with cut-out



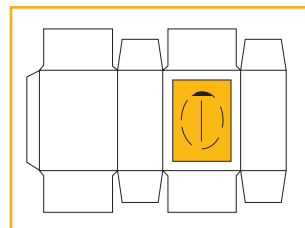
Inner partition placement



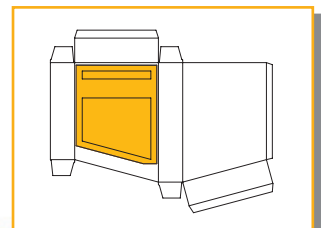
Carrier handle and/or tear strip



Scoring with punch-out coming from the reel or as a blank



Continuous or intermittent length slitting perforation



Oblique window

► Our Product Range:

- Window patching machines for carton blanks
- Film sealing machines for Gable Top Cartons
- Folding box gluing machines
- Automatic stacking systems for
 - window patcher
 - narrow web flexo printing machines
- Compact discs sleeve machines
- CD/DVD tray placing machine
- Machines for special applications

Kohmann GmbH & Co.KG Maschinenbau



► P.O. Box 10 06 55
40806 Mettmann
Germany

Benninghofer Weg 7
40822 Mettmann
Germany

T +49-21 04-9146 0
F +49-21 04-9146 50
sales@kohmann.de
www.kohmann.de